

Introduction highlights

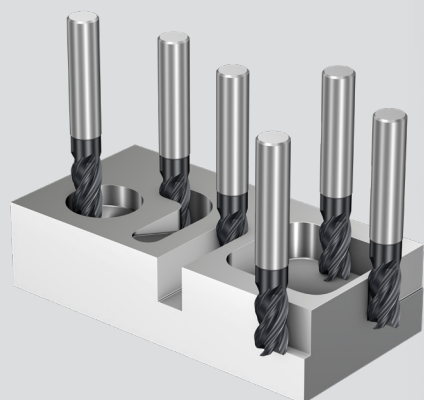
October 2022

CoroMill® Dura

Efficient and versatile end milling

CoroMill® Dura is a new range of high-performing versatile solid end mills. The concept offers true flexibility in roughing to finishing operations in multiple materials.

The key to success lies in the unique WhisperKut™ technology. Unequal helix angles effectively break up harmful harmonics, making smooth and stable milling easier than ever before.



P M K N S
ISO application areas

2–7 flutes, 1–4×D
cutting length

Face geometry with
ramping capability
up to 20°

WhisperKut™
technology:
silent, smooth and
stable milling

Corner radii, neck
and chip divider options

Cylindrical
and Weldon shank

Reliable and highly
wear-resistant
grade GC1730

See CoroMill® Dura
in action online





ISO application areas



Read more about
CoroMill® MF80

CoroMill® MF80

Multi-edge face and shoulder milling cutter

Time to level up your face and shoulder milling operations with the new CoroMill® MF80, a reliable tool for most automotive milling applications in ISO K and P materials.

This concept offers a lightweight cutter body with shim protection ensuring secure, vibration-free cutting.

Application:

- Thin-walled components where low axial forces are required
- Components and machine set-ups with limited stability
- Roughing and semi-roughing

CoroTurn® Prime

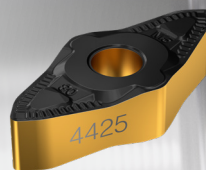
Further boost your productive capacity with second generation B-type inserts

Ultimate cost-efficiency! Double-sided negative inserts with four cutting edges incorporating our latest grade technology.

New, robust tip seat design:

- Prevents tool damage in the event of insert breakage
- Enables shifting feed directions without insert movement

Updated geometries deliver excellent chip control particularly for duplex stainless steel, ductile steels and sticky materials.



CoroTurn® Prime
More information



Authorized distributor: